



## The Running Magnet Kit 4

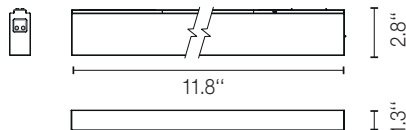
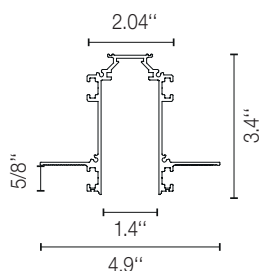
Recessed Version Light Stripe JA8 Black

### Description

Fun with magnets and light. Simultaneously graphic and subtle, the Running Magnet is flexible, precise, and as creative as you. It is track lighting redesigned and elegantly refined. Light elements snap in place and connect automatically though the magic of magnets. Extruded aluminum housings create a clean 1-3/8-inch slot and preconfigured corners complete the system that can run up, around and across walls and ceilings. Finishes align perfectly, always, because Running Magnet can be easily cut on site (except Suspension Up&Down). Linear LED and accent fixtures, available in a variety of sizes, can be exchanged and repositioned quickly, without tools, with artistic results. The Running Magnet is perfect for retail displays where frequent changes are typical and absolute performance is mandatory.

### Dimensions

KIT\_RM4



### Lamp

System Lamp Type	LED
Color Temperature	2700K, *3000K, *3500K, *4000K (See Notes)
Color Rendering	CRI90
Application	General Lighting

### Physical

Material	Aluminum
Ingress Protection Rating	IP20
Finishes	14 Black
Installation type	Ceiling Recessed - IC Rated. For Airtight, consult factory
Environment	Indoor

### Certifications



JA8-2019 CA  
TITLE 24  
LISTED



### Photometrics

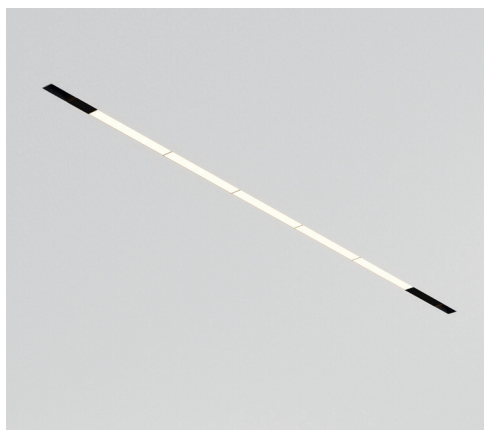
For current IES files please visit  
[professional.flos.com/en-US/us](http://professional.flos.com/en-US/us)

### Warranty

2 years from date of sale.

### Electrical & Control

Driver location	Remote
Driver Input Voltage	120V-277V
Driver Output Voltage	24V
Maximum Driver Wattage	Class 2 - 40W
Control	Standard 0-10V dimming (10-100%)



## The Running Magnet Kit 4

Recessed Version Light Stripe JA8 Black

### Notes

EC to supply site cabling from driver to track location and site UL listed enclosure.

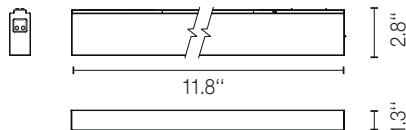
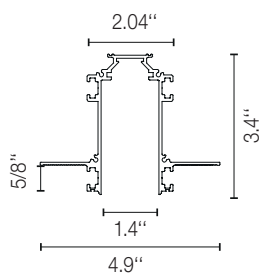
All components required for the installation are included with the system with the exception of 0-10V control.

3000K, 3500K , 4000K and other CCT available but not cataloged. Consult factory for additional color temperatures.

For Airtight instruction, consult factory.

### Dimensions

KIT\_RM4



### Certifications



JA8-2019 CA  
TITLE 24  
LISTED



### Photometrics

For current IES files please visit  
[professional.flos.com/en-US/us](http://professional.flos.com/en-US/us)

### Warranty

2 years from date of sale.

The Running Magnet Kit 4
Recessed Version Light Stripe JA8 Black

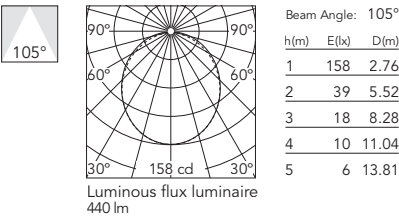
How to specify

M J 0 0 4 U 2 4 0 0 0 0 1
Part Number

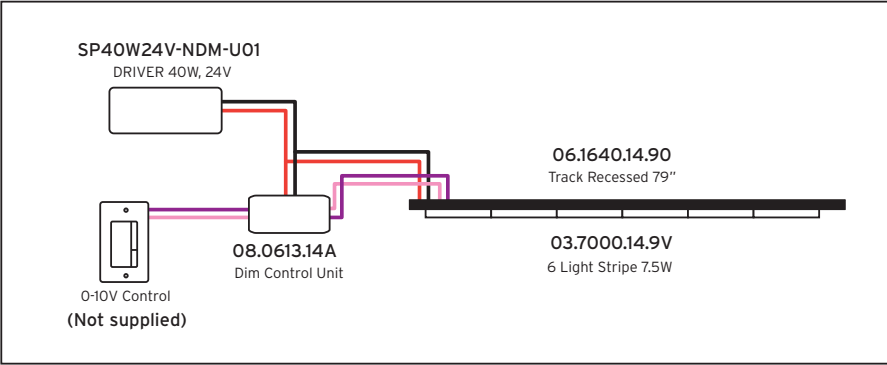
KIT\_RM4: MJ004U2400001

Table with 8 columns: Unit, Finish, CCT, CRI, Delivered Lumens, Watts, Description. It lists two items: a Track (79 inches) and a Light Strip (11.8 inches).

PHOTOMETRICS



Light Strip Recessed



## The Running Magnet Kit 4

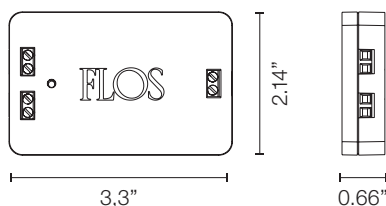
Recessed Version Light Stripe JA8 Black

### Included Accessories

Dimming Control Unit Box 24V 0-10V  
Required for a 0-10V Dimming  
installation. 1 DCU can control up to 25  
fixtures

Part Number:

■ 08.0613.14A



40W non dimmable, 120-277V input.  
24V output. (0-10V dim is through Dim  
Control Unit)

Part Number:

SP40W24V-NDM-U01

